



- ▶ Summer schedule starts with more flights | Seite 1
- ▶ Airports benefit from regional tourism | Seite 2
- ▶ DHL starts work on airfreight hub | Seite 3
- ▶ Air France: Leipzig-Paris in 95 minutes | Seite 4
- ▶ Off to a good start – almost 5% more passengers | Seite 5
- ▶ Good prospects – 7% growth in the first month | Seite 6
- ▶ Dresden is among top 40 urban tourist attractions in Europe | Seite 6
- ▶ Regional economic news | Seite 7
- ▶ Miscellaneous | Seite 8

Central German Airports Group

▶ Summer schedule starts with more flights

At airports in the state of Saxony summer already begins on March 26.



With the start of daylight saving time, the new flying schedule will take effect which makes travel for people from the states of Saxony, Saxony-Anhalt, Brandenburg, Lower Saxony, and neighboring countries such as the Czech Republic and Poland more attractive. Until October 28, Dresden and Leipzig/Halle airports both offer a wide range of connections including flights to numerous tourist resorts.

Air Berlin has included Dresden Airport in its close-knit Euro Shuttle network. The airline goes to about 40 destinations in Southern Europe and North

Germanwings is one of four low-cost airlines flying from Dresden

Africa either directly or through Palma de Mallorca and Nuremberg. One-way tickets to Mallorca cost from €49 incl. taxes and charges. Flights from Dresden via Palma de Mallorca and on to Spain and Portugal start at €59. New destinations are Athens and the Greek island of Samos, with stopovers at Nuremberg.

Starting March 28, InterSky, an Austrian low-fare airline, is introducing flights between Dresden and Friedrichshafen on Lake Constance. There will be three connections per week, and all can be booked on the Internet and with travel agents.



For Leipzig-Halle Airport the summer schedule brings a second link to Paris. In addition to Air Berlin which goes to the French capital via Nuremberg, Air France will be flying to Charles de Gaulle which has convenient connections to 190 destinations worldwide, among them New York, Montreal, Houston (from June 1), Shanghai, Johannesburg and Sao Paulo.

Hapag-Lloyd-Express will also be using Leipzig/Halle Airport in future. From the end of March, the airline which is affiliated to the TUI Group is to fly to Stuttgart with Fokker jets which leave from Monday through Friday.

www.airfrance.fr; www.hxl.com; www.airberlin.com; www.intersky.biz

Central German Airports Group

▶ Airports benefit from regional tourism

2005 was a good year for tourism in Saxony and Saxony-Anhalt. The two states are becoming ever more popular among people who come to Germany.

Compared with the previous year, the number of visitors and overnight stays increased. The trend also benefited the two Saxon airports at Dresden and Leipzig/Halle. This year, festivities to mark 1,200 years of Halle and 800 years of Dresden will provide excellent opportunities to visit for those interested in culture and history.

Saxony counted 5.491m visitors in 2005, one percent up on the previous year, and overnight stays rose by 1.4% to 14.9m.

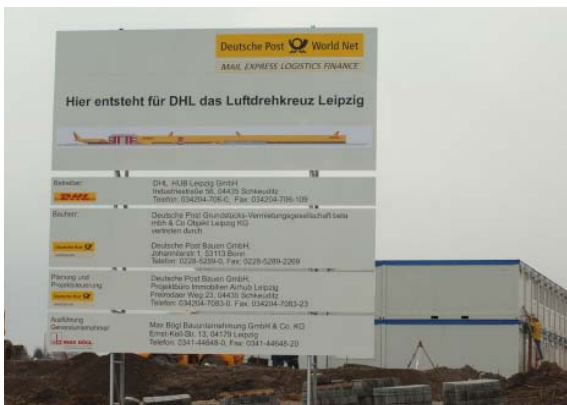
Saxony-Anhalt, too, reported considerable growth in both categories, with some 2.4m visitors, or 3% more, and six million overnight stays which is an increase of 2.3%. Compared with the early 1990s these statistics have set new records. Tourists stayed for an average 2.5 days, and by far most overnight stays were booked by the Dutch and Danish. Above-average growth in this field was due to larger numbers of visitors from Russia, Spain and Turkey, but also from China, Hong Kong and South Korea.



Leipzig/Halle Airport

► DHL starts work on airfreight hub

DHL, an affiliate of Post-Express, has begun work on its air cargo hub at Leipzig/Halle after the construction site had been handed over to Deutsche Post World Net at the beginning of the year.



In late February, site facilities were installed north of Federal Road 6, followed by placing foundation concrete. The successful bid for general contractor came from Max Bögl Bauunternehmung GmbH & Co. KG who prevailed over more than 40 companies. In the first construction phase, a 40,000 sqm distribution center and a hangar with a floor space of about 23,000 sqm will be erected.

The agreement providing for the construction of the air cargo center had been signed by DHL and Leipzig/Halle Airport in September 2005. Building permission for the project was granted at the

Very conspicuous – preparations for DHL's airfreight hub have started on the south side of Leipzig/Halle Airport

beginning of November. As planned, DHL will put the third among its three largest air cargo centers into operation in 2008.

Deutsche Post is investing some €300m into the new site and plans to provide about 3,500 jobs by 2012, with 7,000 more created indirectly. Flughafen Leipzig/Halle GmbH is to put another €350m into expanding the south runway, apron, taxiways, environmental protection and noise control.

Municipalities want to be in the same boat

DHL's project has encouraged cooperation between towns and villages around Leipzig/Halle Airport. The City of Leipzig and the rural district of Delitzsch have prepared an agreement which is to be signed shortly. It provides for a transfer of functions from Leipzig to the district administrator's office at Delitzsch, with the aim of simplifying administrative and other procedures for applicants. Land needed to build the DHL hub is partly situated in the local subdistrict of Schkeuditz, a town located in the rural district of Delitzsch, while other plots belong to Leipzig.



Leipzig/Halle Airport

► Air France: Leipzig-Paris in 95 minutes

Paris is now easier to reach from Leipzig/Halle, thanks to a direct connection which starts on March 26. The Air France jet which seats 50 will take passengers non-stop in 95 minutes to Charles de Gaulle airport and back twice daily.



Bernard Bazot, the airline's German Director spoke of a comeback and thanked the airport for support and cooperation in establishing the link. This makes Leipzig/Halle the tenth destination Air France has in Germany and, after Berlin, the second one in eastern Germany.

The Air France flights are aimed at business travelers and tourists. A direct connection to the French capital had in the past been demanded in particular by industry representatives from the region around Leipzig/Halle. Eastern Germany has attracted major French companies such as TOTAL who oper-

Eric Malitzke and Bernard Bazot welcome the new link between Leipzig/Halle and Paris

ate Europe's most modern petrol refinery at Spergau near Leuna with a workforce of about 600, and Lafarge, a manufacturer of building materials who operates a cement factory at Karsdorf in the south of the state of Saxony-Anhalt.

"We've been aware of the potential this link has for a long time", said Bazot who sees no rivalry emerging with flights to and from Berlin. "This will attract customers and we expect many new passengers." Embraer 145 jets will be shuttling between Paris and Leipzig/Halle.



Air France will launch a major marketing campaign to publicize the new connection, with advertising on 80 taxis in the Halle-Leipzig region and ads in local daily newspapers. There are also plans to talk to travel agents in Erfurt, Weimar, Gotha, Jena, Chemnitz, Dresden and the Leipzig/Halle conurbation.

► Bernard Bazot, German Director of Air France

What was your reason for adding Leipzig/Halle Airport to your network from March 26?

We flew the Paris-Leipzig route already during the 1990s. Since then both the city and the region have developed enormously, and Leipzig/Halle has made a name for itself as a cultural and business center. I am thinking particularly of the tradeshows and congresses which take place here, and the potential for business travel that comes with names such as Air Liquide, Porsche or Bayer. The decision to make Leipzig/Halle our 10th destination in Germany has also been the result of a number of marketing studies.

From the end of March, an Embraer 145 jet will shuttle twice daily between Leipzig/Halle and Paris



Bernard Bazot,
German Director
Air France

Who do you think will use this connection?

Our target group are people traveling on business and on vacation. A large number of companies in and around Leipzig, some of them from France, appreciate an air link to Paris. At the same time we wish to attract tourists with reasonable prices and promote the exchange between cities. A return trip currently is available for €119 including taxes and charges. Paris is, of course, worth a visit, and from our hub at Charles de Gaulle airport you can continue to 190 destinations worldwide.

In the medium term, do you see a greater involvement in the Leipzig/Halle region?

Yes, if there is more demand we will fly more often per day or use larger planes.

▶ Air France – KLM

- ▶ Air France and KLM merged in September 2004 to form Europe's largest airline
- ▶ Annual sales now reach over €20bn
- ▶ Air France/KLM operate over 1,300 daily flights to more than 225 destinations
- ▶ The combined fleet consists of 568 planes
- ▶ The annual passenger volume exceeds 64 million

▶ SkyTeam

- ▶ On June 22, 2000 the global SkyTeam alliance was set up by nine international airlines – Air France/KLM Royal Dutch Airlines, Aeromexico, Alitalia, Continental Airlines, CSA Czech Airlines, Delta Airlines, Korean Air and Northwest Airlines
- ▶ SkyTeam members operate 15,000 daily flights to a total of 684 destinations in 133 countries
- ▶ An airfreight operation – SkyTeam Cargo – was established in September 2000

www.airfrance.fr and www.skyteam.com

Leipzig/Halle Airport

▶ **Off to a good start – almost 5% more passengers**

The first month of the new year at Leipzig/Halle Airport has brought a continuation of last year's trend toward passenger growth.

The figure for January was 106,387, or 4.8% more than in the same month of the previous year. A major contributing factor was the rise in Euro Shuttle flights to London/Stansted operated by Air Berlin from once three to now seven per week. Germanwings has contributed its share by flying between Leipzig/Halle and Cologne/Bonn twice daily for the last five months.



Dresden Airport

▶ Good prospects – 7% growth in the first month

Dresden Airport showed a promising trend at the beginning of 2006, with a 7% increase in passenger volume in January compared with the previous year.

The airport which marked the 70th anniversary of its foundation last year, counted a total of 107,838 travelers and thus continued its outstanding performance. Last year set a new record with a total passenger volume of some 1.8m, or 10% more than in 2004.

The latest rise in passenger numbers is due to a growth in scheduled services. More and more people are flying low-cost, and InterSky will be the fourth low-budget airline to take off from Dresden at the end of March.

Dresden Airport

▶ Dresden is among top 40 urban tourist attractions in Europe

Dresden's airport clearly benefits from the city's architecture and monuments.



The 2005/2006 report published by European Cities Tourism gives Dresden a place among Europe's 40 most attractive cities. The only other place in eastern Germany which ranks in this "Premier League" is Berlin.

With the rebuilt Frauenkirche church, the Semper Opera House and the Zwinger, Dresden's reputation goes far beyond the state of Saxony. This can be seen from the number of overnight stays booked by a total of almost three million visitors who came last year. Tourism has become a firmly established industry which employs over 28,000 local people.

Dresden is becoming ever more popular among tourists

In this setting, Dresden provides important links for people from Saxony, the south of the state of Brandenburg and, to a growing extent, passengers from two adjoining new EU countries – the Czech Republic and Poland. Czech people who are keen travelers have only one international airport near Prague and recently frequented airports in Saxony in larger numbers. To get there, they can use a modern network of motorways, and even more Czech people could decide to do so once the A 17 motorway from Dresden to Prague is completed.



▶ Regional economic news

▶ Dresden firm to convert planes for China Eastern Airlines

EADS Elbe Flugzeugwerke has won a large-scale order from China.

The company which is located at Dresden airport will convert three Airbus A 300-600 planes, which are currently used for passengers, into freightliners for China Eastern Airlines. Work on the first Airbus is to begin in December, followed by the other two next year.

EADS EFW President & CEO Horst Emker commented: "We are very glad that China Eastern Airlines, our first customer there, has opted for the popular large-capacity A 300 as a way of meeting increasing demand on the airfreight market."

EADS has so far delivered 122 converted cargo planes to over 20 customers in all parts of the world. Within the EADS group, Elbe Flugzeugwerke specializes in converting Airbus passenger planes into freightliners type A 300 and A 310.

China Eastern Airlines was founded in 1995 and operates a fleet of more than 100 Airbus planes, 77 of them of the type A 320, 16 of the A 300/A 310 family and 10 of the A 340 type.

www.efw.eads.net

▶ Q-Cells AG opens branch in Hong Kong

Q-Cells AG, a listed company from Thalheim in the state of Saxony-Anhalt, has opened a branch office in Hong Kong.

The selling agency of the world's largest non-affiliated manufacturer of solar cells will cover all of East and Southeast Asia and the Indian subcontinent. So far the company only had a sales and purchasing office in China and served customers in the rest of Asia from home.

Q-Cells AG, with a workforce of more than 700, plans to raise its export quota from now 35% to over 50% by 2008 and already delivers solar cells to makers of photovoltaic modules in Japan, South Korea, China, Thailand, Hong Kong, Taiwan and India.

www.q-cells.com

**▶ Lufthansa and Rolls-Royce lay foundation stone**

Lufthansa Technik and Rolls-Royce are to build an aircraft engine repair plant at Arnstadt in the German state of Thuringia with an investment of €100m.

More than 500 jobs will be created by “N 3 Engine Overhaul Services”, a company founded by Lufthansa Technik AG and Rolls-Royce in February 2003. Beginning in 2007, the facility will recondition advanced engines type Trent 500, 700 and 900 which are used on long-distance Airbus versions such as A 330, A 340 and A 380. The plant in Thuringia will serve customers in Europe, the Americas and Africa. The target for the first year of operation is to service 50 engines, a number which is to rise to over 100 after two years. When final construction has been completed, 200 large engines will be overhauled per year.

www.rolls-royce.com and www.lufthansa-technik.com

▶ Save time going to Saxony – A 14 motorway to be extended

The A 14 motorway (Dresden-Magdeburg) will be extended beyond Magdeburg, Saxony-Anhalt’s capital, toward the city of Schwerin.

Work on the vital north-south link which has been requested particularly by the business community in the Halle-Leipzig and Dresden regions starts on March 20 with the construction of a bridge near Colbitz.

When completed in about 10 years, the new section of the A 14 will connect the North of Germany to the Halle-Leipzig and Dresden conurbations. It will be about 155 Kilometer long and cost €500m.

▶ Miscellaneous**▶ Listen and rummage at Leipzig’s book fair**

From March 16 – 19, authors, publishers and bookworms will again converge on Leipzig to visit the annual book fair.

To open the event, the organizers will award the Leipzig Book Fair Prize (prize money €45,000) for the second time. Last year, some 108,000 visitors filled the exhibition center to see the ranges of 2,142 publishing houses from 31 countries shown over 49,000 sqm of floor space. Last spring, more than 2,400 journalists covered the international encounter of authors, publishers, specialist visitors and book lovers.



For 15 years now, the tradeshow has been accompanied by Europe's largest literary festival, "Leipzig liest" (Leipzig reads). This time, a total of 1,800 events, 300 more than last year, have been planned by the organizers – the Leipzig Fair, the city of Leipzig, the German Booksellers' Association, Mitteldeutscher Rundfunk public radio, CLUB Bertelsmann, Haus des Buches and publishing houses represented in Leipzig. Some 1,500 staff will be needed to hold the event.

www.leipziger-buchmesse.de

► For art lovers – Willi Sitte gallery opens

Since early March, the town of Merseburg has had a new attraction – a display of paintings, prints and drawings by Willi Sitte, an artist from Halle, in the renovated curia of the cathedral. The 85-year old painter and graphic artist who once taught at the Burg Giebichenstein Art Academy, has been given 700 sqm to show 160 paintings and drawings, and 30 prints created over a period of 60 years.

www.willi-sitte-galerie-merseburg.de

► Growing – Leipzig and Dresden

While populations, particularly in Eastern German cities, are shrinking year after year, there is also growth.

Leipzig is a case in point, and Dresden wants to follow suit by 2007. Both Saxon cities grew over the last few years, populations included. Thus Leipzig topped the 500,000 mark in 2005, a target envisaged by Dresden, the state capital, for the next few years. At the end of last year, Dresden's population was about 487,200, just under 7,000 more than a year earlier.

www.dresden.com and www.leipzig.de

► Imprint

Published by: Central German Airports Group

Edited by: Felix Zimmermann (chief editor)

Evelyn Schuster, Petra Siebert, Dierk Näther, Uwe Schuhart, Christian Adler

Photos: Archives at Leipzig/Halle and Dresden Airports, DWT Dittrich

Design and Production: Contur

Please send any queries, comments or suggestions to:

Felix.Zimmermann@mdf-ag.com, Telephone: +49 (0) 341 224 1086